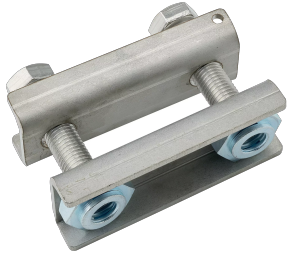


# NVENT ERIFLEX FLEXBUS HCBC CLAMP



## CERTIFICATIONS



## FEATURES

Rigid design assures even contact pressure

Installs quickly and easily

Ideal for on-site modifications

Made with non-magnetic material stainless steel for high-current connections to prevent the formation of magnetic fields

Contains crimped self-locking nut for vibration resistance and easy installation

No drilling needed to fix the Flexbus Conductor on the transformer/power supply palm

Includes voltage detection connecting point

RoHS compliant

## SPECIFICATIONS

**Material:** Stainless Steel 304 (EN 1.4301)

Catalog Number	Item Name	A	B	C	D	Thickness(T)	Torque(TQ)	Hole Size(HS)	Unit Weight	Conductor Width
FLEXCLAMP100	508192	3.937"	6.299"	0.787"	1.693"	0.157"	73.76 ft lb	0.217"	2.028 lb	3.54" – 3.94"
FLEXCLAMP120	508193	4.724"	7.087"	0.787"	1.693"	0.157"	73.76 ft lb	0.217"	2.205 lb	4.33" – 4.72"
FLEXCLAMP160	508194	6.299"	8.661"	0.787"	1.693"	0.157"	73.76 ft lb	0.217"	2.910 lb	5.12" – 6.30"
FLEXCLAMP63	508190	2.480"	4.843"	0.787"	1.693"	0.157"	73.76 ft lb	0.217"	1.168 lb	1.18" – 2.48"
FLEXCLAMP80	508191	3.150"	5.512"	0.787"	1.693"	0.157"	73.76 ft lb	0.217"	1.852 lb	2.76" – 3.15"

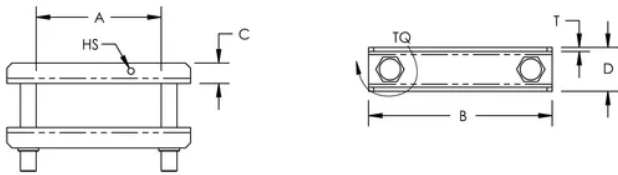
## ADDITIONAL PRODUCT DETAILS

It is mandatory to use the HCBC Clamp associated with the HCBC Plate for proper Flexbus Conductor connection.

The minimum clearance distance is 14mm according to IEC 61439-1 with air pollution degree 3. If this distance cannot be respected, insulation material should be added between the metallic LV cover and the HCBC clamp. Flexbus IP2x Boots is also a solution.

If the Flexbus Conductors have a horizontal entry, an extender needs to be added between the power supply palm and HCBC Clamp and Plate.

## DIAGRAMS



## WARNING

nVent products shall be installed and used only as indicated in nVent's product instruction sheets and training materials. Instruction sheets are available at [www.nvent.com](http://www.nvent.com) and from your nVent customer service representative. Improper installation, misuse, misapplication or other failure to completely follow nVent's instructions and warnings may cause product malfunction, property damage, serious bodily injury and death and/or void your warranty.

### North America

+1.800.753.9221  
Option 1 – Customer Care  
Option 2 – Technical Support

### Europe

Netherlands:  
+31 800-0200135  
France:  
+33 800 901 793

### Europe

Germany:  
800 1890272  
Other Countries:  
+31 13 5835404

### APAC

Shanghai:  
+ 86 21 2412 1618/19  
Sydney:  
+61 2 9751 8500



Our powerful portfolio of brands:  
**nVent.com CADDY ERICO HOFFMAN RAYCHEM SCHROFF**  
**TRACER**