

## Cabinet cooling unit



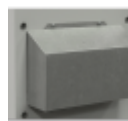
### Description

<b>Order Number:</b>	856220001
<b>Brand Name:</b>	SLIMLINE PRO
<b>Colour:</b>	RAL 7035
<b>Housing Material:</b>	Mild steel, powder coated
<b>Ingress Protection:</b>	IP 55 / Type 12
<b>Approvals:</b>	CE, cURus, cULus

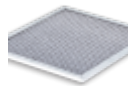
#### Accessories:



[Gasket Kit Type 4](#)



[Cold Air Outlet Duct 8540/62](#)



[Washable Aluminium Filter 8562](#)



[Vibration Protection Kit 3](#)

## Technical Data

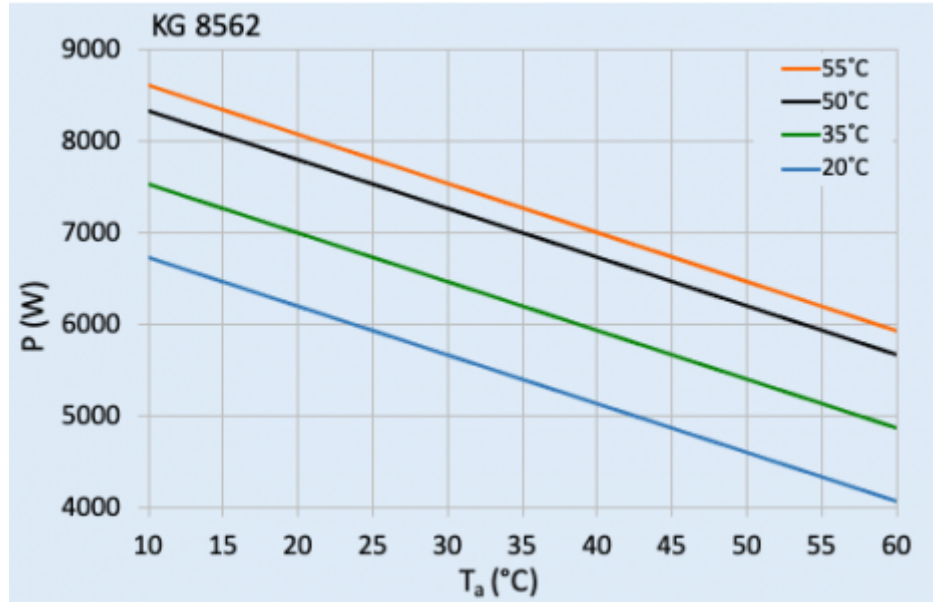
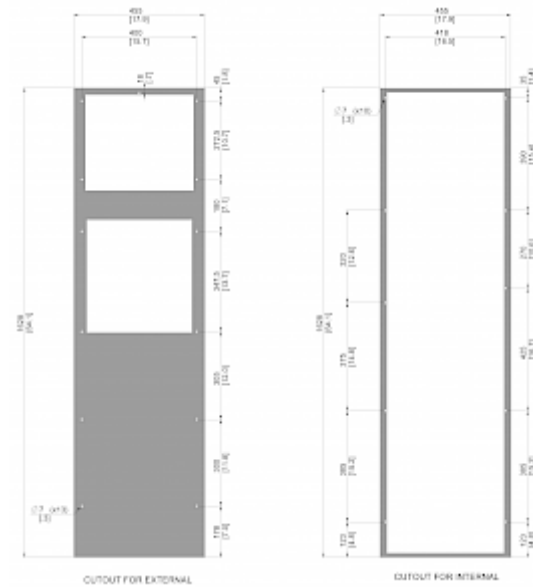
<b>Cooling capacity L35L35 (EN14511-3):</b>	6000 W @ 50 Hz 6200 W @ 60 Hz
<b>Cooling capacity L35L50 (EN14511-3):</b>	5000 W @ 50 Hz 5500 W @ 60 Hz
<b>EER L35L35:</b>	2.0
<b>Compressor type:</b>	Scroll
<b>Refrigerant / GWP:</b>	R134a / 1430
<b>Refrigerant charge:</b>	1200 g / 42 oz.
<b>High / low Pressure:</b>	32 / 6 bar 460 / 88 psi
<b>Operating Temperature Range:</b>	10°C - 55°C
<b>UL temperature range:</b>	10°C - 55°C
<b>Air flow volume (system / unimpeded):</b>	Ambient air circuit: 1000 / 1400 m <sup>3</sup> /h Cabinet air circuit: 1050 / 1400 m <sup>3</sup> /h
<b>Mounting:</b>	Wall mounted / recessed
<b>Dimensions A x B x C (D+E):</b>	1,630 x 455 x 270 (75+195) mm
<b>Weight:</b>	86.5 kg
<b>Voltage / Frequency:</b>	380-415 V 50 Hz 3~ 400-460 V 60 Hz 3~
<b>UL Voltage / Frequency:</b>	460 V / 60Hz 3~
<b>Current L35L35:</b>	6.2 A @ 50 Hz 6.3 A @ 60 Hz
<b>Starting current:</b>	52 A
<b>Max. current:</b>	10.5 A
<b>Nominal power L35L35:</b>	3.1 kW @ 50 Hz 3.9 kW @ 60 Hz
<b>Max. power:</b>	7.0 kW
<b>Fuse:</b>	15 A (T)
<b>Max circuit ampacity:</b>	15 A
<b>Short-circuit current rating:</b>	5 kA

<b>Rated current compressor:</b>	6.4 A
<b>Full load current fans:</b>	1.3 A
<b>Connection:</b>	4 pole terminal block for power 5 pole terminal block for signals 3 pole terminal block for RS 485

Please click on the graphics to download.

More CAD drawings can be found under [Product Download](#).

> [Overview Product Group SLIMLINE PRO - cooling units in a new design](#)

**Performance graph:**

[click image to enlarge](#)
**Cut Out Dimension:**

[click image to enlarge](#)

## Order Information

<b>Box dimensions</b>	1642 x 555 x 299 mm
<b>Gross weight</b>	97.5 Kg
<b>Taric code</b>	84158200