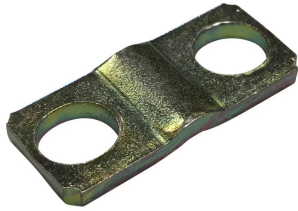


EB-142 MAIN TERMINAL CLAMP



CERTIFICATIONS



FEATURES

Quick and easy installation

RoHS compliant

SPECIFICATIONS

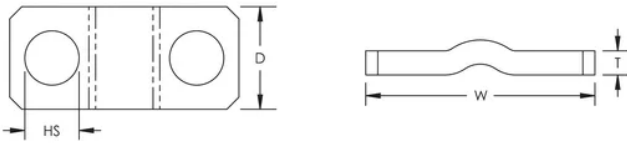
Table 1/2

Catalog Number	Article Number	Material	Finish	Conductor Size, IEC	Hole Size (HS)	Depth (D)
EB142CON35	568672	Steel	Electrogalvanized	6 - 35 mm ² Stranded	5.5 mm	9.5 mm

Table 2/2

Catalog Number	Article Number	Width (W)	Thickness (T)	Torque (TQ)	Unit Weight
EB142CON35	568672	22 mm	2 mm	2 N·m	0 kg

DIAGRAMS



WARNING

nVent products shall be installed and used only as indicated in nVent's product instruction sheets and training materials. Instruction sheets are available at www.nvent.com and from your nVent customer service representative. Improper installation, misuse, misapplication or other failure to completely follow nVent's instructions and warnings may cause product malfunction, property damage, serious bodily injury and death and/or void your warranty.

North America

+1.800.753.9221
Option 1 – Customer Care
Option 2 – Technical Support

Europe

Netherlands:
+31 800-0200135
France:
+33 800 901 793

Europe

Germany:
800 1890272
Other Countries:
+31 13 5835404

APAC

Shanghai:
+ 86 21 2412 1618/19
Sydney:
+61 2 9751 8500



Our powerful portfolio of brands:
nVent.com CADDY ERICO HOFFMAN RAYCHEM SCHROFF
TRACER