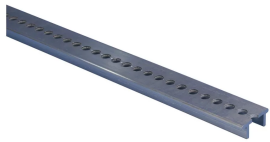


# NVENT ERIFLEX FLEXPBUS ALUMINUM PERFORATED PROFILE



## CERTIFICATIONS



## FEATURES

Optional brackets are available

Factory-punched head holes for quick assembly

RoHS compliant

## SPECIFICATIONS

Table 1/2

Catalog Number	Article Number	Material	A	Hole Size (HS)	Width (W)	Height (H)
FLEXALPROF2M	508100	Aluminum	12.5 mm	8 mm	35 mm	15 mm

Table 2/2

Catalog Number	Article Number	Length (L)	Unit Weight
FLEXALPROF2M	508100	2000 mm	0.9 kg

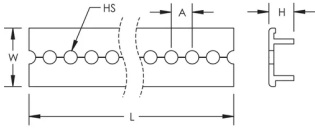
## ADDITIONAL PRODUCT DETAILS

Support kit and aluminum profile are sold separately.

When cable tray is used, we recommend installing a Flexbus Support at each extremity, in order to protect the Flexbus Conductor against potential sharp edges of the cable tray.

## DIAGRAMS

---



## WARNING

---

nVent products shall be installed and used only as indicated in nVent's product instruction sheets and training materials. Instruction sheets are available at [www.nvent.com](http://www.nvent.com) and from your nVent customer service representative. Improper installation, misuse, misapplication or other failure to completely follow nVent's instructions and warnings may cause product malfunction, property damage, serious bodily injury and death and/or void your warranty.

### North America

+1.800.753.9221  
Option 1 – Customer Care  
Option 2 – Technical Support

### Europe

Netherlands:  
+31 800-0200135  
France:  
+33 800 901 793

### Europe

Germany:  
800 1890272  
Other Countries:  
+31 13 5835404

### APAC

Shanghai:  
+ 86 21 2412 1618/19  
Sydney:  
+61 2 9751 8500



Our powerful portfolio of brands:  
**nVent.com CADDY ERICO HOFFMAN RAYCHEM SCHROFF**  
**TRACER**